



**The outstanding components 2021~2022**



Parts Maker :

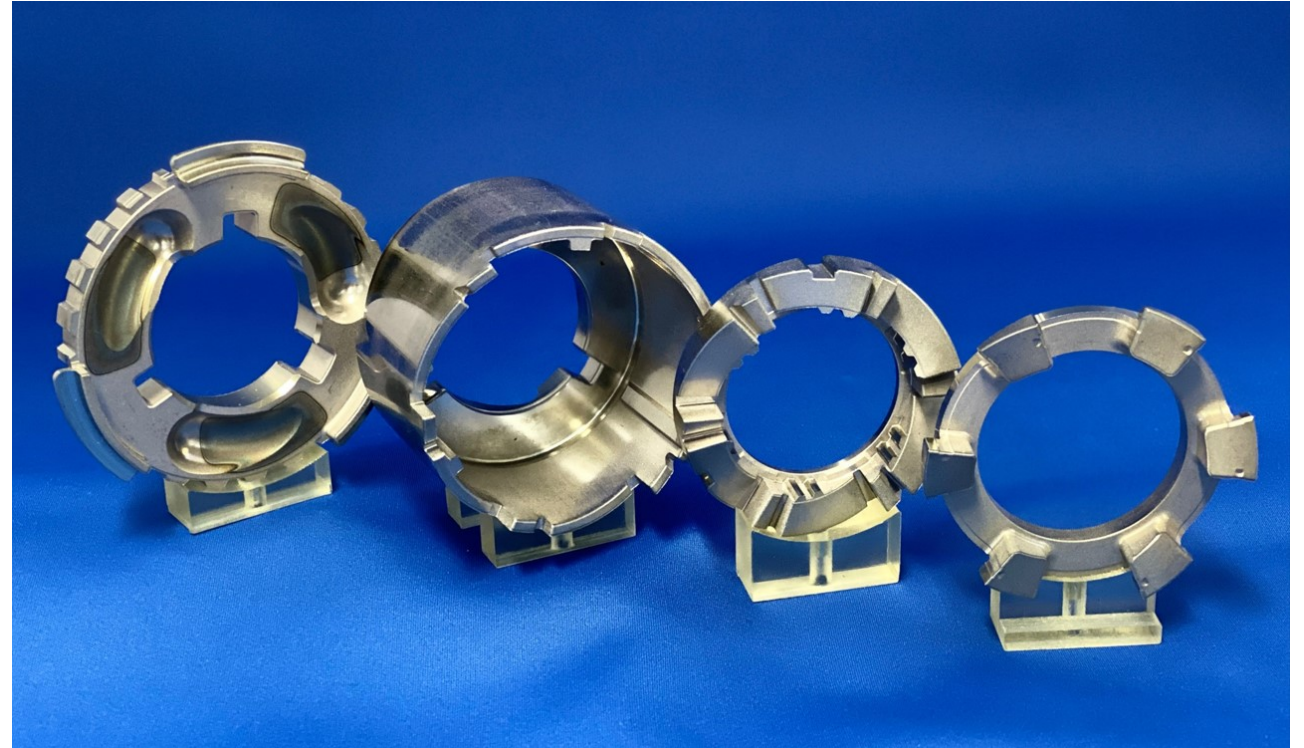
**Fine Sinter Co., Ltd.**

Part Name:

**Sintering of disconnect parts**

End Use and Function:

**Installed in 4WD vehicles as a  
component of  
the world's first "disconnect  
mechanism"**





Parts Maker:

**Porite Taiwan Co., Ltd.**

Part Name:

**Ring Gear**

End Use and Function:

**Cordless drill gearbox**





Parts maker :

**Porite Taiwan Co., Ltd.**

Part Name:

**Double Chain Sprocket**

End use & Function:

**Applied in E-VCT of the engine  
of SUV and pickup Truck.**





Parts maker :

**Porite India PVT. Ltd.**

Part Name:

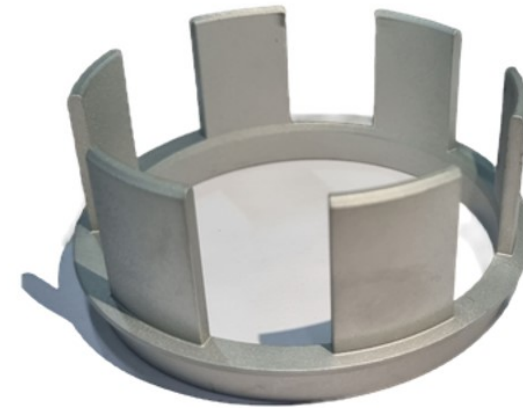
**Flux Ring**

End use & Function:

**Commercial Vehicle Engine Cooling  
System.**

Value Addition:

**Near Net Shape**





Parts maker :

**Porite India PVT. Ltd.**

Part Name:

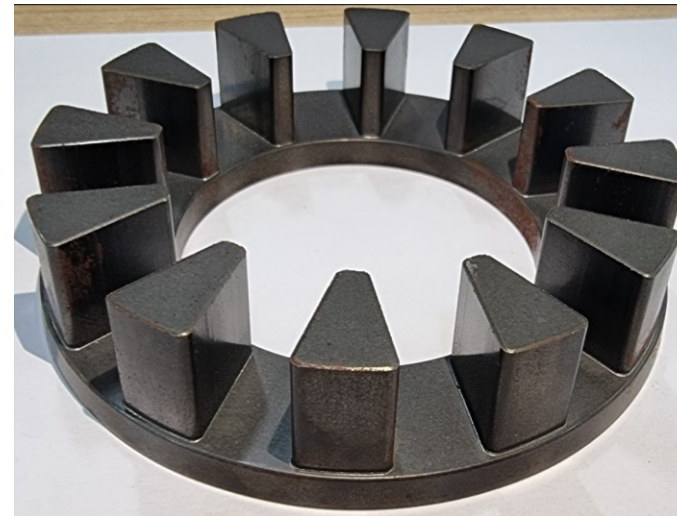
**Single sided stator**

End use & Function:

**Electric Vehicle Motor**

Value Addition:

**Conversion from Laminated Steel to PM**





Parts maker :

**Porite India PVT. Ltd.**

Part Name:

**Arm Comp Decomp**

End use & Function:

**Engine Decompression**

Value Addition:

**Net Shape Compaction**







Parts maker :

**Porite India PVT. Ltd.**

Part Name:

**Crown Face Gear**

End use & Function:

**Solar Tracking System**

Value Addition:

**Complex Geometry Compaction**







Parts maker :

**Porite India PVT. Ltd.**

Part Name:

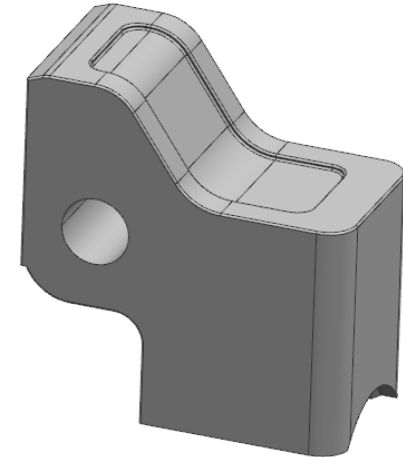
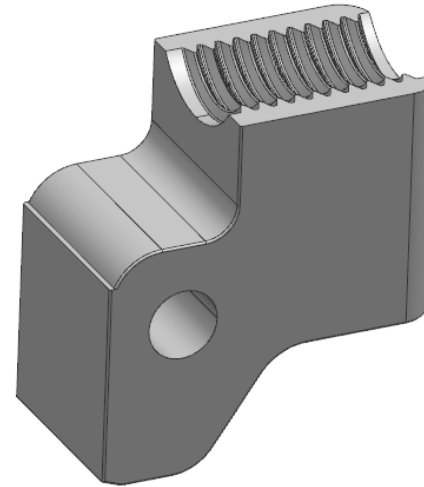
**Lock Vise**

End use & Function:

**Power Tools**

Value Addition:

**Conversion from Conventional Maching  
to PM**



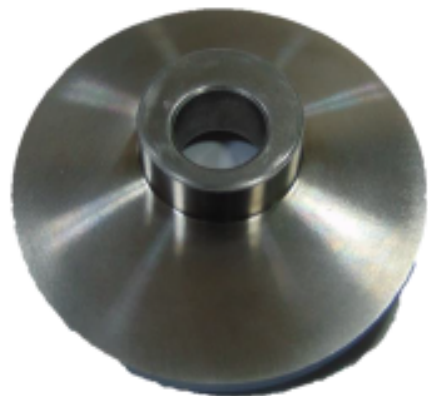


**Part Maker:**  
GKN Sinter Metals, Pimpri, India.

**Part Name:**  
Plate Gear Shift Cam

**End Use & Function:**  
Motorcycle Gear Shifter Mechanism

**Conversion Part:**  
Casting to PM



**Part Maker:**

GKN Sinter Metals, Pimpri, India.

**Part Name:**

Holder Spring

**End Use & Function:**

Spare Wheel Mounting Assembly

**Conversion Part :**

Sheet Metal to PM

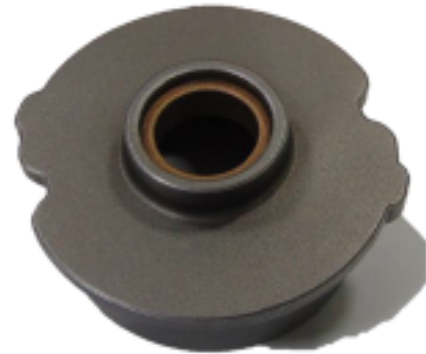


**Part Maker:**  
GKN Sinter Metals, Pimpri, India.

**Part Name:**  
Base Plate, Decompressor

**End Use & Function:**  
Motorcycle Decompression Unit

**Conversion Part :** Casting to PM



**Part Maker:**  
GKN Sinter Metals, Pimpri, India.

**Part Name:**  
Internal Ring Gear

**End Use & Function:**  
SUV Starter Motor



**Part Maker:**

**GKN Sinter Metals, Pimpri, India.**

**Part Name:**

**BOB Weight, Decompressor**

**End Use & Function:**

**Motorcycle Decompression Unit**

**Conversion Part:**

**Casting to PM**





**Thank you.**